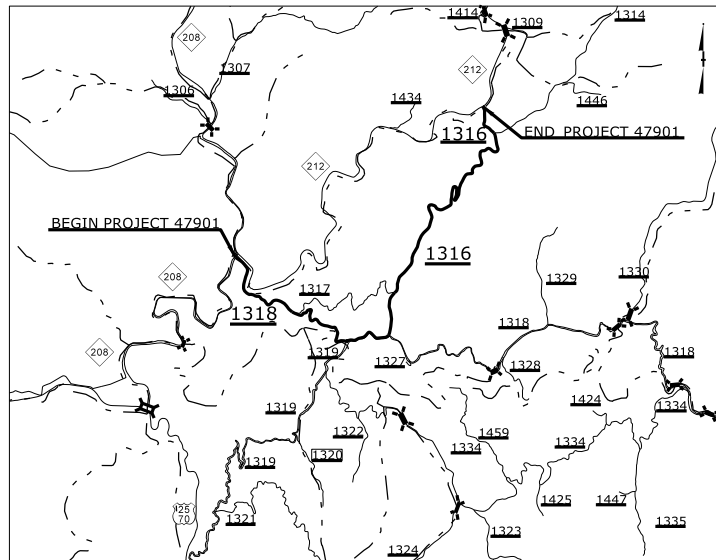


09/08/99

PROJECT: 47901  
CONTRACT: DM00304



VICINITY MAP

STATE OF NORTH CAROLINA  
DIVISION OF HIGHWAYS

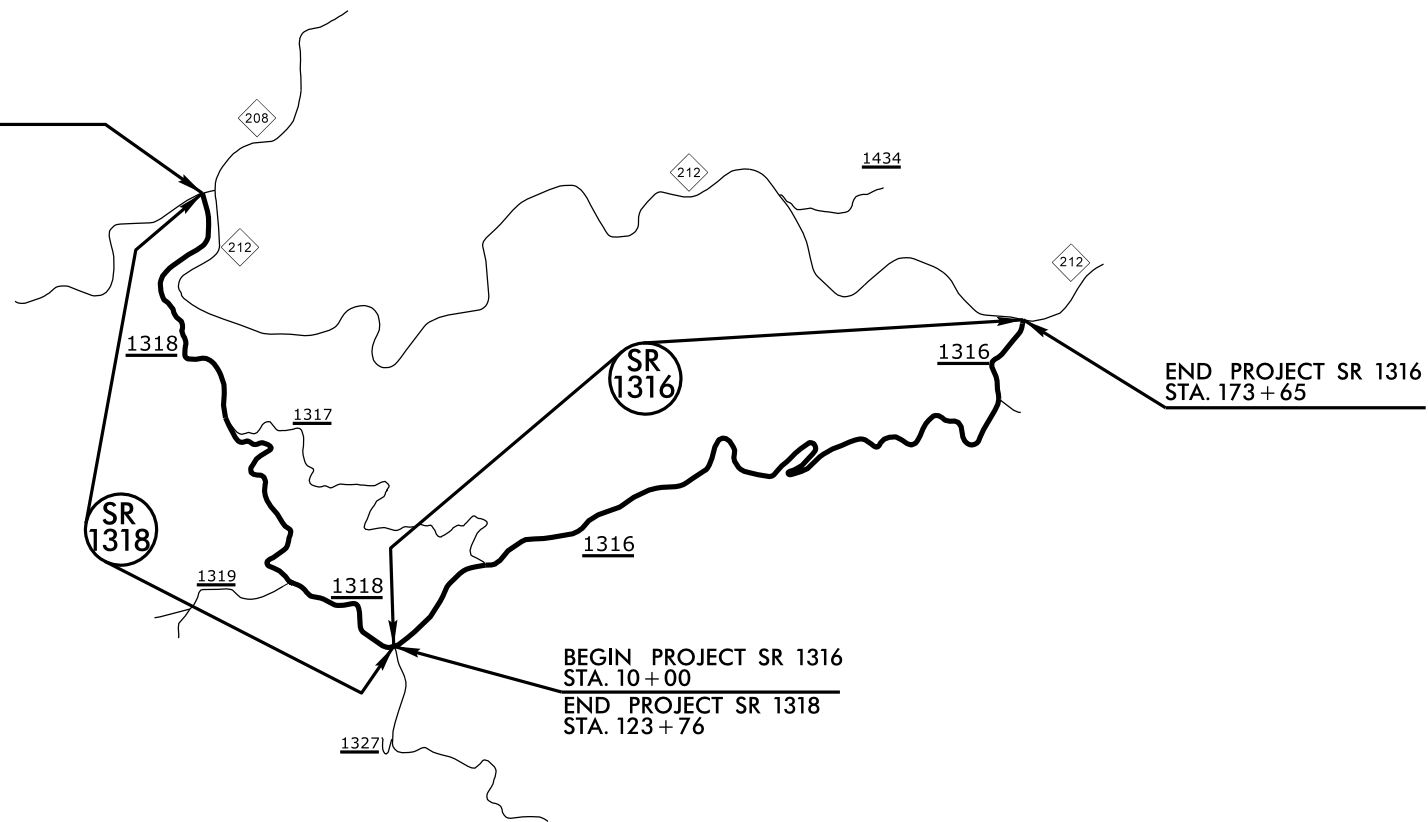
**MADISON COUNTY**

LOCATION: SR 1318 (GUNTERTOWN RD) AND SR 1316 (CHAPEL HILL RD)

TYPE OF WORK: INSTALLATION OF GUARDRAIL

STATE	STATE PROJECT REFERENCE NO.	SHEET NO.	TOTAL SHEETS
N.C.	47901	1	15
STATE PROJ. NO.	F.A. PROJ. NO.	DESCRIPTION	
47901		PE	
47901		CONST	

BEGIN PROJECT SR 1318  
STA. 10+00



END PROJECT SR 1316  
STA. 173+65

BEGIN PROJECT SR 1316  
STA. 10+00  
END PROJECT SR 1318  
STA. 123+76



GRAPHIC SCALES

NTS

DESIGN DATA

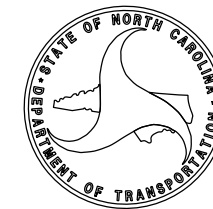
PROJECT LENGTH

LENGTH OF TIP PROJECT LENGTH = 5.2 MILES

Prepared in the Office of:  
**DIVISION 13 DDC UNIT**

55 Orange St., Asheville NC, 28801

2018 STANDARD SPECIFICATIONS



GENERAL NOTES:

2018 SPECIFICATIONS  
 EFFECTIVE: 01-16-2018  
 REVISED:

EFF. 01-16-2018  
 REV.

SHEET NUMBER	SHEET
1	TITLE SHEET
2	INDEX OF SHEETS, GENERAL NOTES, AND STANDARD DRAWINGS
3	GUARDRAIL SUMMARY
4-15	PLAN SHEETS

GUARDRAIL:

THE GUARDRAIL LOCATIONS SHOWN ON THE PLANS MAY BE ADJUSTED DURING CONSTRUCTION. THE CONTRACTOR SHALL VERIFY THE LOCATIONS WITH THE ENGINEER PRIOR TO ORDERING GUARDRAIL MATERIALS.

SUBSURFACE PLANS:

NO SUBSURFACE PLANS ARE AVAILABLE ON THIS PROJECT. THE CONTRACTOR SHOULD MAKE HIS OWN INVESTIGATION AS TO THE SUBSURFACE CONDITIONS.

2018 ROADWAY ENGLISH STANDARD DRAWINGS

The following Roadway Standards as appear in "Roadway Standard Drawings" Highway Design Branch - N. C. Department of Transportation - Raleigh, N. C., Dated January, 2018 are applicable to this project and by reference hereby are considered a part of these plans:

STD.NO.	TITLE
DIVISION 8 - INCIDENTALS	
862.01	Guardrail Placement
862.02	Guardrail Installation
DIVISION 11 - WORK ZONE TRAFFIC CONTROL	
1101.01	Work Zone Advance Warning Signs
1101.02	Temporary Lane Closures
1101.04	Temporary Shoulder Closures
1101.11	Traffic Control Design Tables
1110.01	Stationary Work Zone Signs
1110.02	Portable Work Zone Signs
1130.01	Drum
1135.01	Cones
1150.01	Flagging Devices
1160.01	Temporary Crash Cushion
1165.01	Truck Mounted Attenuator
1180.01	Skinny Drum



PROPOSED GUARDRAIL LOCATION 1

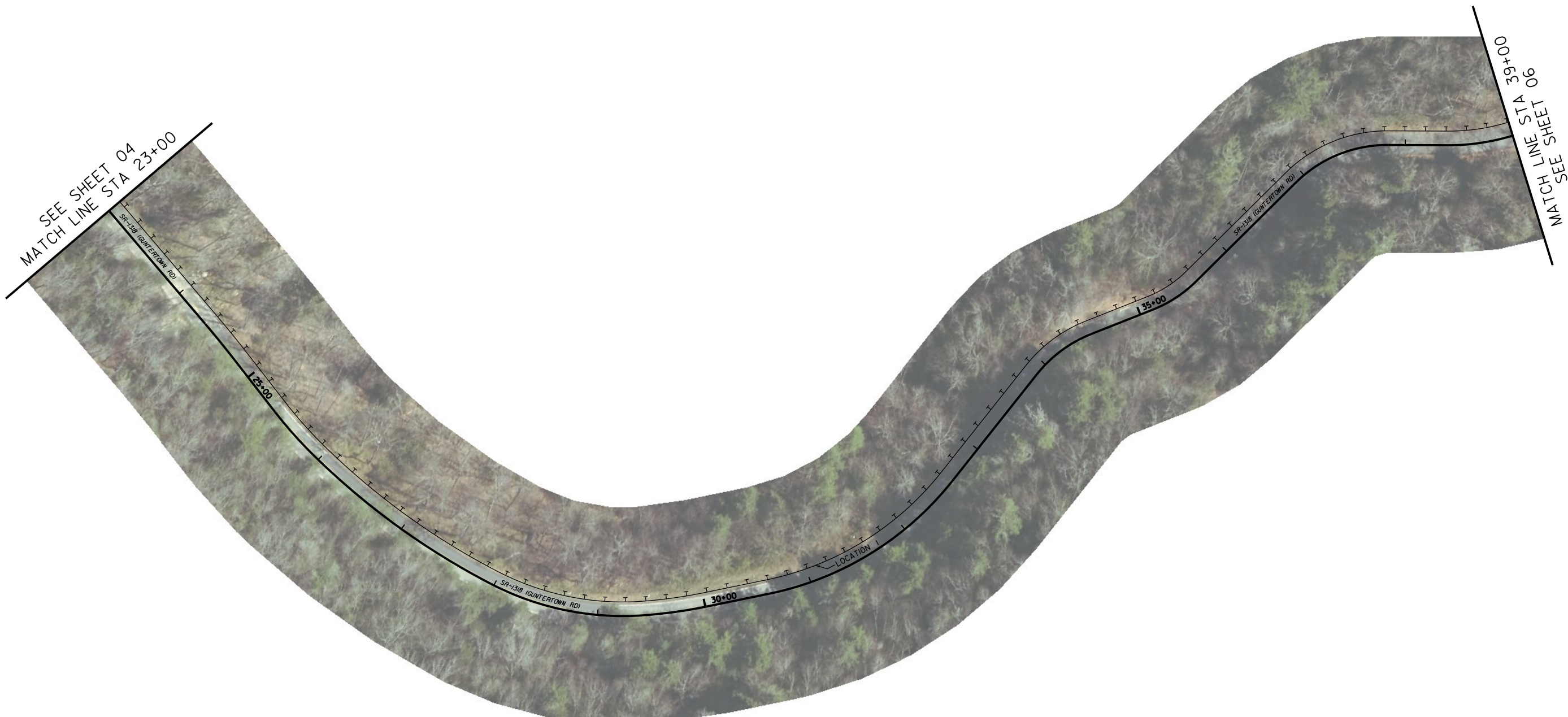
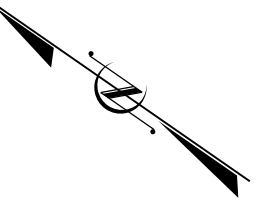
- 3275 LF STEEL BEAM GUARDRAIL
- 2 EA GUARDRAIL END UNITS, TYPE TL-3
- 275 LF REMOVE EXISTING GUARDRAIL



BEGIN PROJECT DM00304  
 NC-208 CENTERLINE POT =  
 SR-1318 (GUNTERTOWN RD) POT STA 10+00



NOTE: ALIGNMENT AND STATIONING IS FOR REFERENCE PURPOSES ONLY.

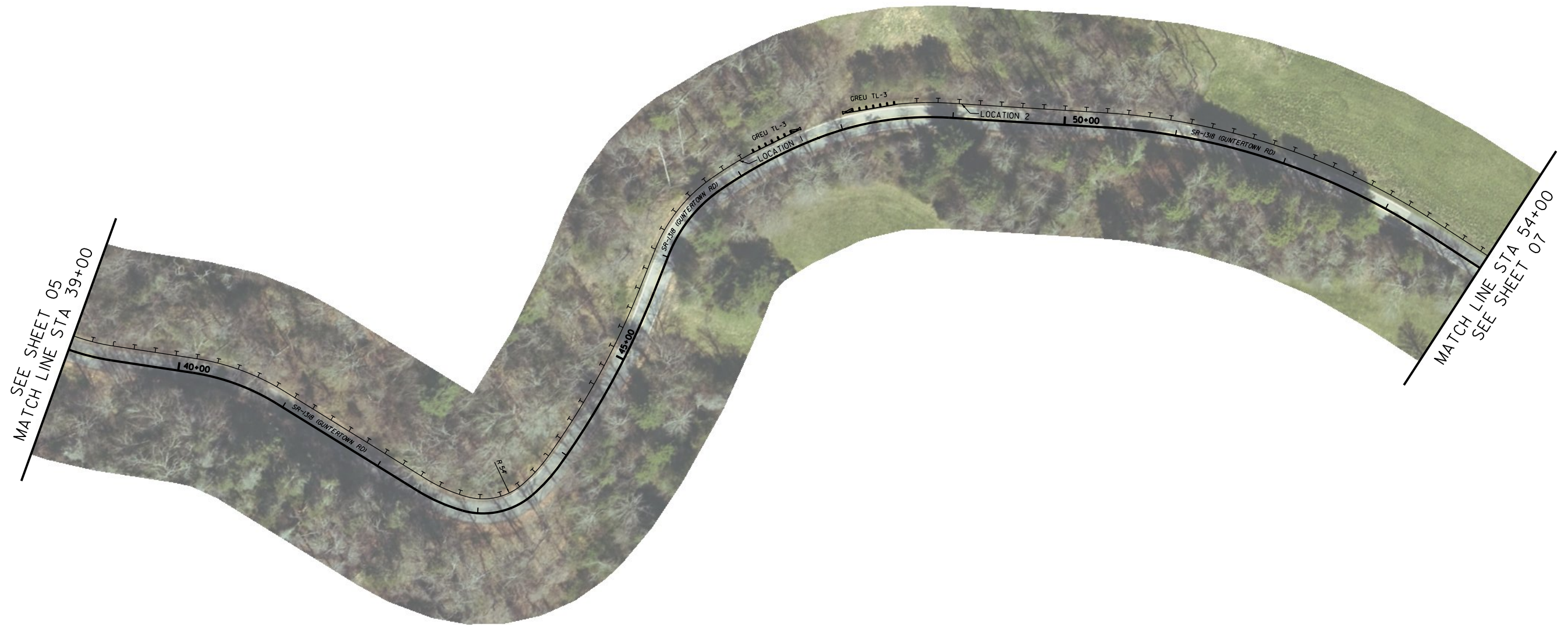


NOTE: ALIGNMENT AND STATIONING IS FOR REFERENCE PURPOSES ONLY.

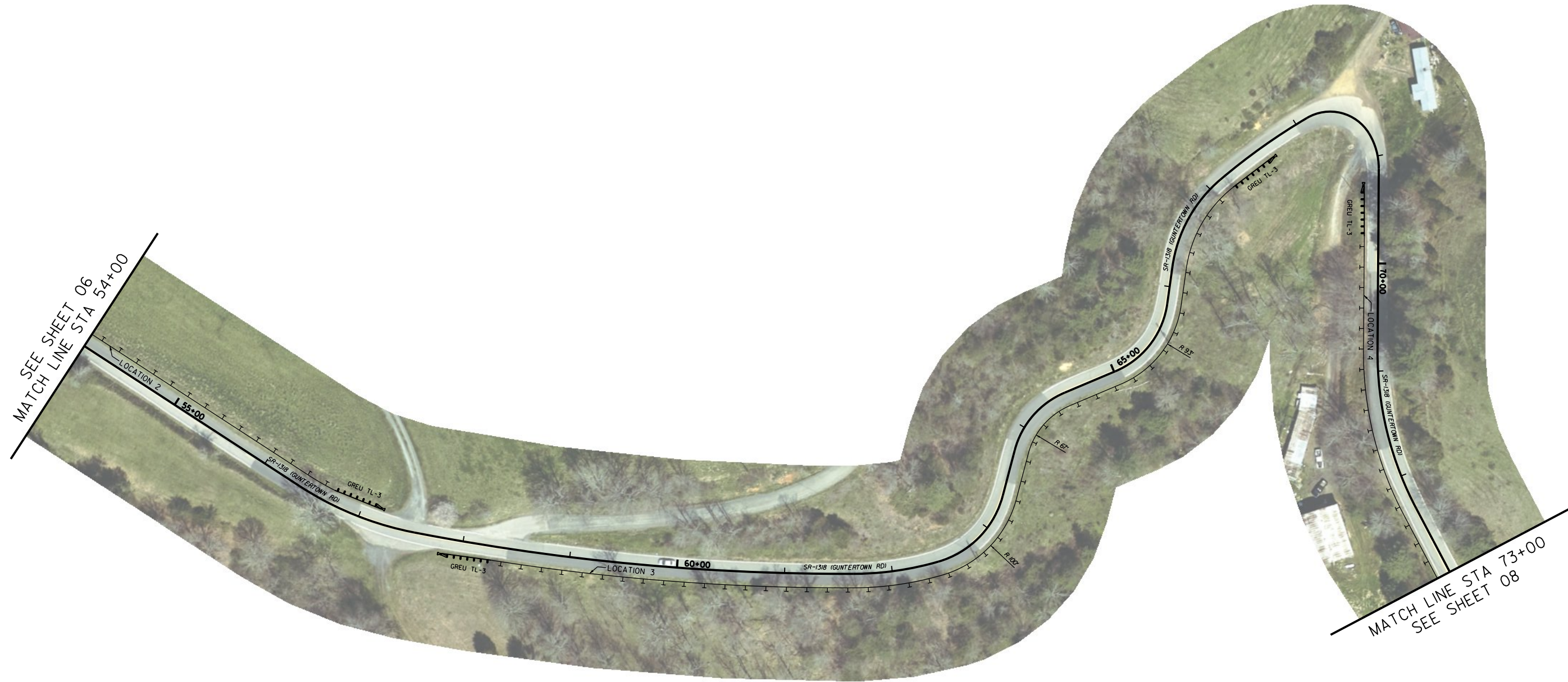


PROPOSED GUARDRAIL LOCATION 2

825 LF STEEL BEAM GUARDRAIL  
2 EA GUARDRAIL END UNITS, TYPE TL-3



NOTE: ALIGNMENT AND STATIONING IS FOR REFERENCE PURPOSES ONLY.



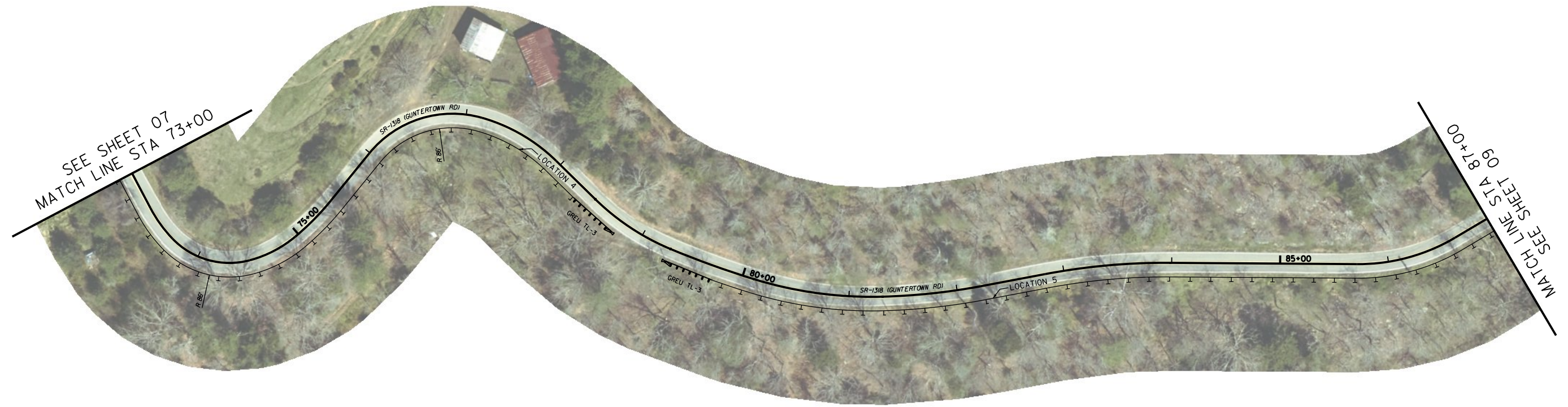
MATCH LINE STA 54+00  
SEE SHEET 06

MATCH LINE STA 73+00  
SEE SHEET 08

PROPOSED GUARDRAIL LOCATION 3  
900 LF STEEL BEAM GUARDRAIL  
2 EA GUARDRAIL END UNITS, TYPE TL-3

PROPOSED GUARDRAIL LOCATION 4  
862.5 LF STEEL BEAM GUARDRAIL  
2 EA GUARDRAIL END UNITS, TYPE TL-3

NOTE: ALIGNMENT AND STATIONING IS FOR REFERENCE PURPOSES ONLY.

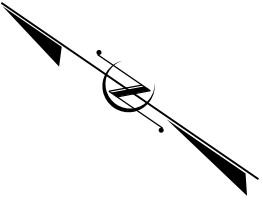


PROPOSED GUARDRAIL LOCATION 5

- 1475 LF STEEL BEAM GUARDRAIL
- 25 LF STEEL BEAM GUARDRAIL, SHOP CURVED
- 1 EA GUARDRAIL END UNITS, TYPE TL-3
- 1 EA GUARDRAIL END UNITS, TYPE AT-1

NOTE: ALIGNMENT AND STATIONING IS FOR REFERENCE PURPOSES ONLY.





SR- 1318 (GUNTERTOWN RD) STA 100+17 =  
SR- 1319 (REVERE RD) POT

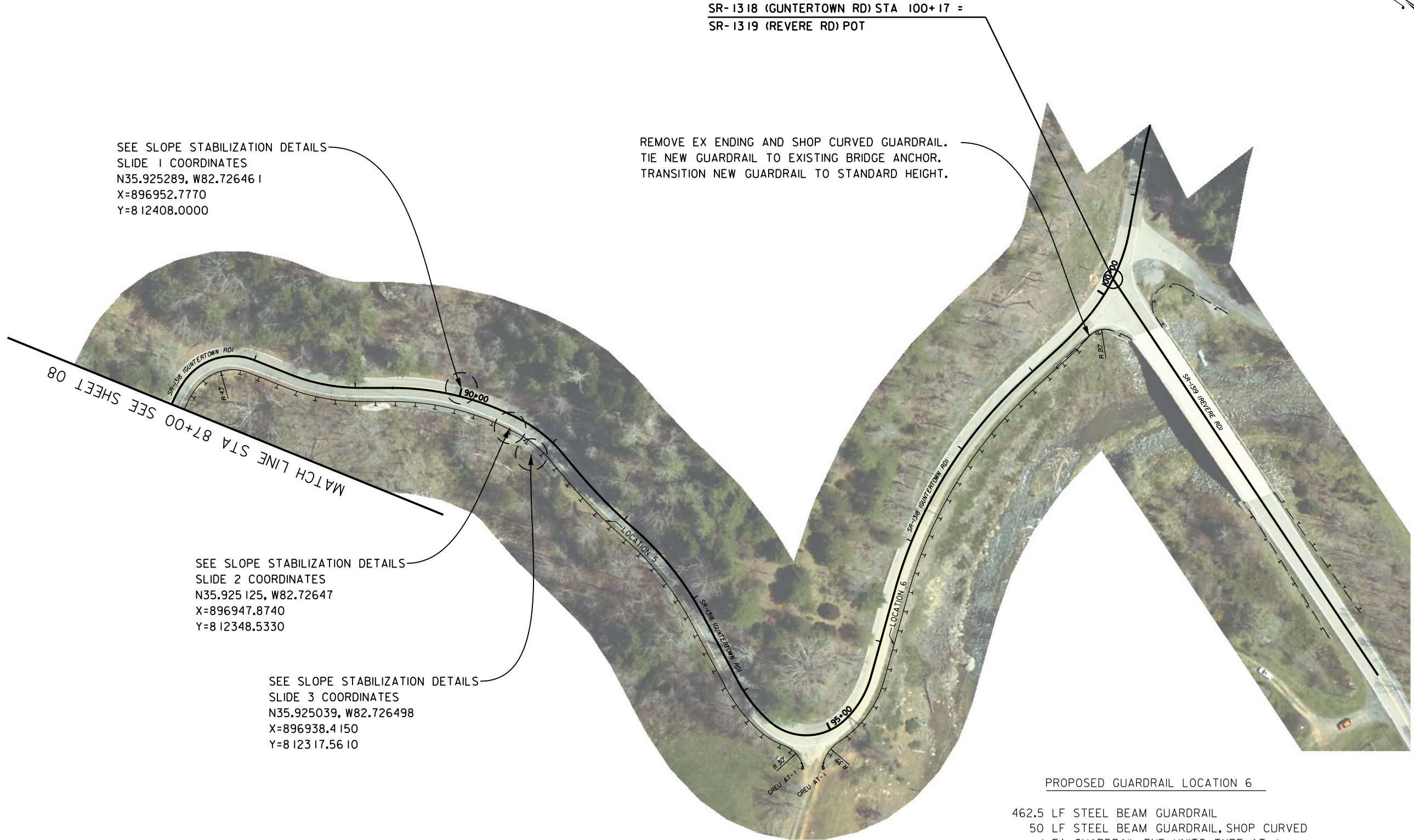
SEE SLOPE STABILIZATION DETAILS  
SLIDE 1 COORDINATES  
N35.925289, W82.726461  
X=896952.7770  
Y=812408.0000

REMOVE EX ENDING AND SHOP CURVED GUARDRAIL.  
TIE NEW GUARDRAIL TO EXISTING BRIDGE ANCHOR.  
TRANSITION NEW GUARDRAIL TO STANDARD HEIGHT.

SEE SLOPE STABILIZATION DETAILS  
SLIDE 2 COORDINATES  
N35.925125, W82.72647  
X=896947.8740  
Y=812348.5330

SEE SLOPE STABILIZATION DETAILS  
SLIDE 3 COORDINATES  
N35.925039, W82.726498  
X=896938.4150  
Y=812317.5610

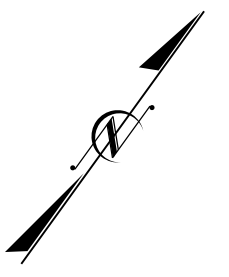
MATCH LINE STA 87+00 SEE SHEET 08



PROPOSED GUARDRAIL LOCATION 6

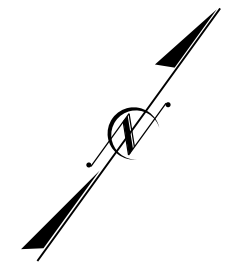
- 462.5 LF STEEL BEAM GUARDRAIL
- 50 LF STEEL BEAM GUARDRAIL, SHOP CURVED
- 1 EA GUARDRAIL END UNITS, TYPE AT-1
- 75 LF REMOVE EXISTING GUARDRAIL

NOTE: ALIGNMENT AND STATIONING IS FOR REFERENCE PURPOSES ONLY.



SR 1318 (GUNTERTOWN RD) STA 123+76 =  
SR- 1316 (CHAPEL HILL RD) POT STA 10+00 =  
SR- 1318 (BIG LAUREL RD) POT

NOTE: ALIGNMENT AND STATIONING IS FOR REFERENCE PURPOSES ONLY.

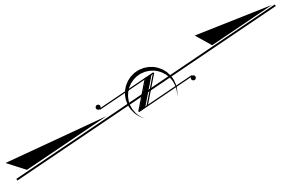


PROPOSED GUARDRAIL LOCATION 7

1000 LF STEEL BEAM GUARDRAIL  
 2 EA GUARDRAIL END UNITS, TYPE TL-3

MATCH LINE STA 91+00 SEE SHEET 12

NOTE: ALIGNMENT AND STATIONING IS FOR REFERENCE PURPOSES ONLY.

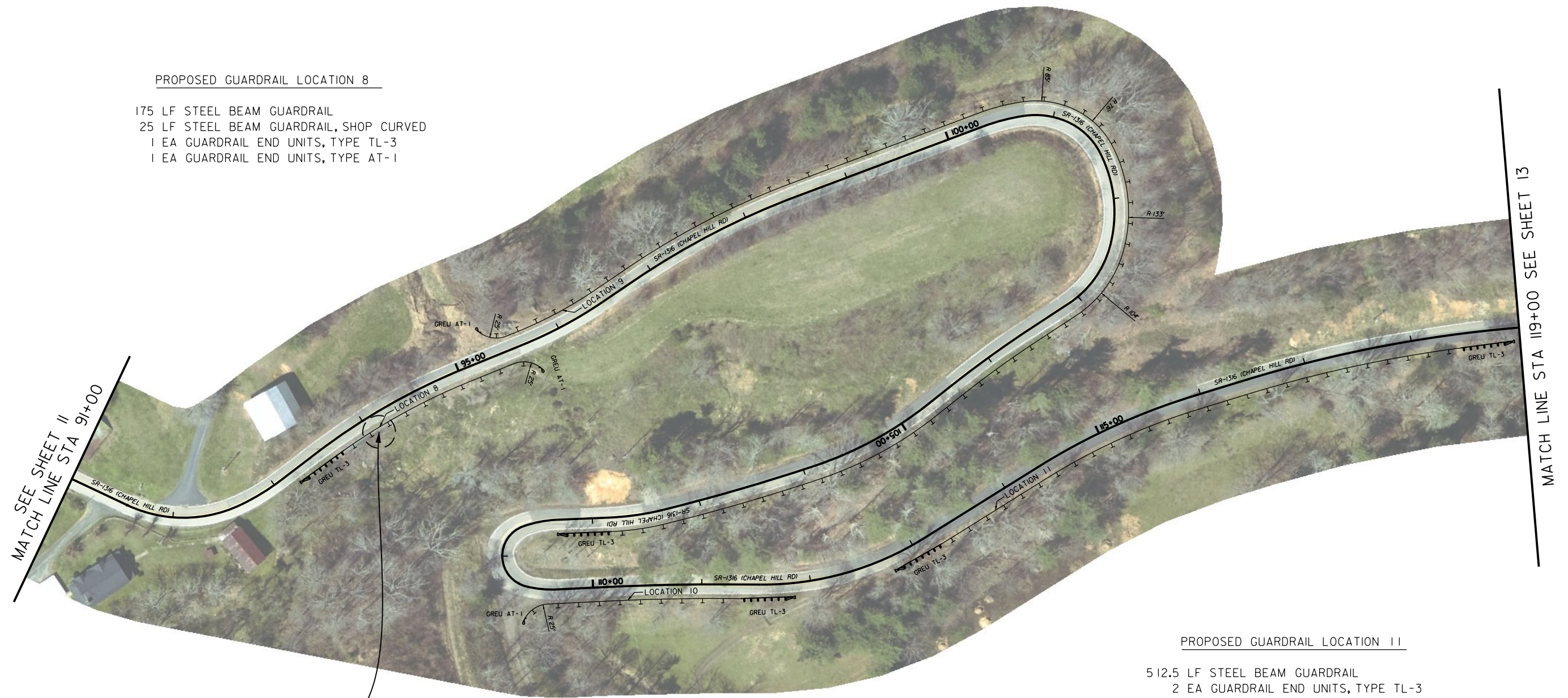


PROPOSED GUARDRAIL LOCATION 9

- 1275 LF STEEL BEAM GUARDRAIL
- 25 LF STEEL BEAM GUARDRAIL, SHOP CURVED
- 1 EA GUARDRAIL END UNITS, TYPE TL-3
- 1 EA GUARDRAIL END UNITS, TYPE AT-1

PROPOSED GUARDRAIL LOCATION 8

- 175 LF STEEL BEAM GUARDRAIL
- 25 LF STEEL BEAM GUARDRAIL, SHOP CURVED
- 1 EA GUARDRAIL END UNITS, TYPE TL-3
- 1 EA GUARDRAIL END UNITS, TYPE AT-1



SEE SHEET 11  
MATCH LINE STA 91+00

MATCH LINE STA 119+00 SEE SHEET 13

SEE SLOPE STABILIZATION DETAILS  
SLIDE 4 COORDINATES  
N35.943398, W82.708549  
X=902498.532  
Y=818796.856

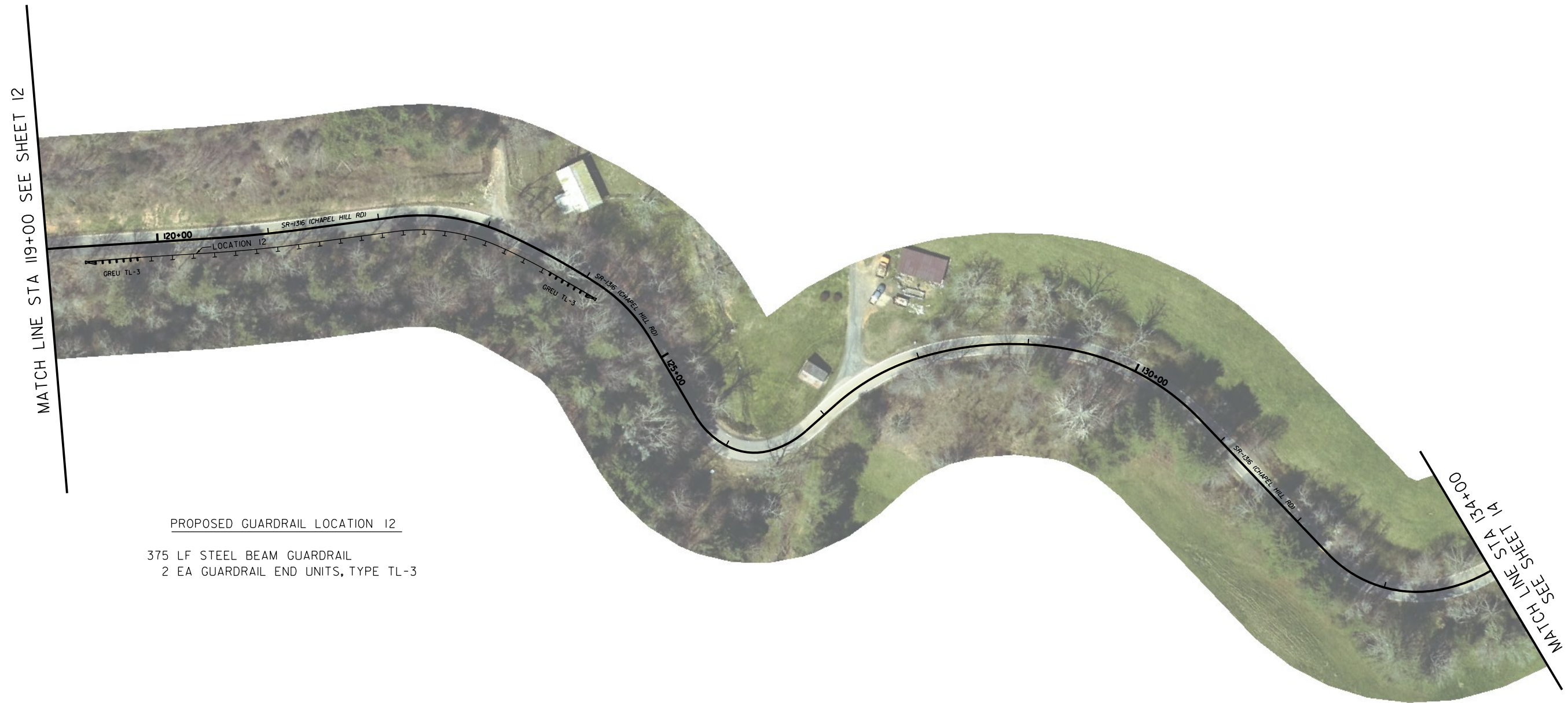
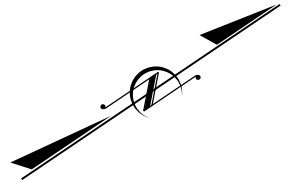
PROPOSED GUARDRAIL LOCATION 10

- 175 LF STEEL BEAM GUARDRAIL
- 25 LF STEEL BEAM GUARDRAIL, SHOP CURVED
- 1 EA GUARDRAIL END UNITS, TYPE TL-3
- 1 EA GUARDRAIL END UNITS, TYPE AT-1

PROPOSED GUARDRAIL LOCATION 11

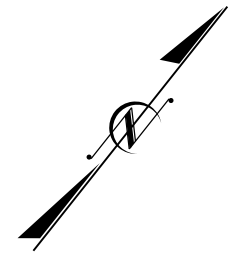
- 512.5 LF STEEL BEAM GUARDRAIL
- 2 EA GUARDRAIL END UNITS, TYPE TL-3

NOTE: ALIGNMENT AND STATIONING IS FOR REFERENCE PURPOSES ONLY.

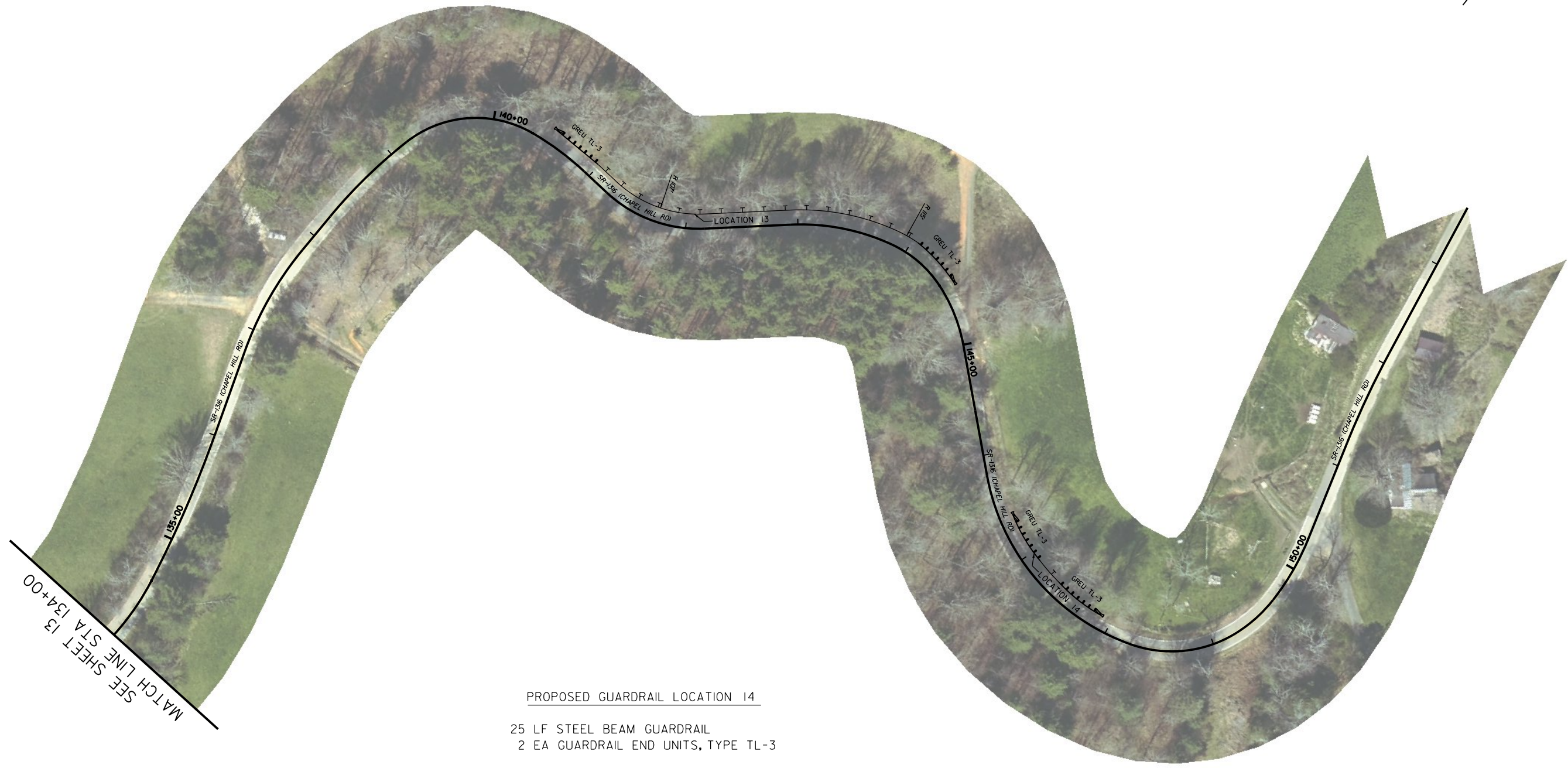


PROPOSED GUARDRAIL LOCATION 12  
 375 LF STEEL BEAM GUARDRAIL  
 2 EA GUARDRAIL END UNITS, TYPE TL-3

NOTE: ALIGNMENT AND STATIONING IS FOR REFERENCE PURPOSES ONLY.

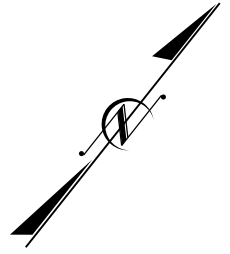


PROPOSED GUARDRAIL LOCATION 13  
 300 LF STEEL BEAM GUARDRAIL  
 2 EA GUARDRAIL END UNITS, TYPE TL-3

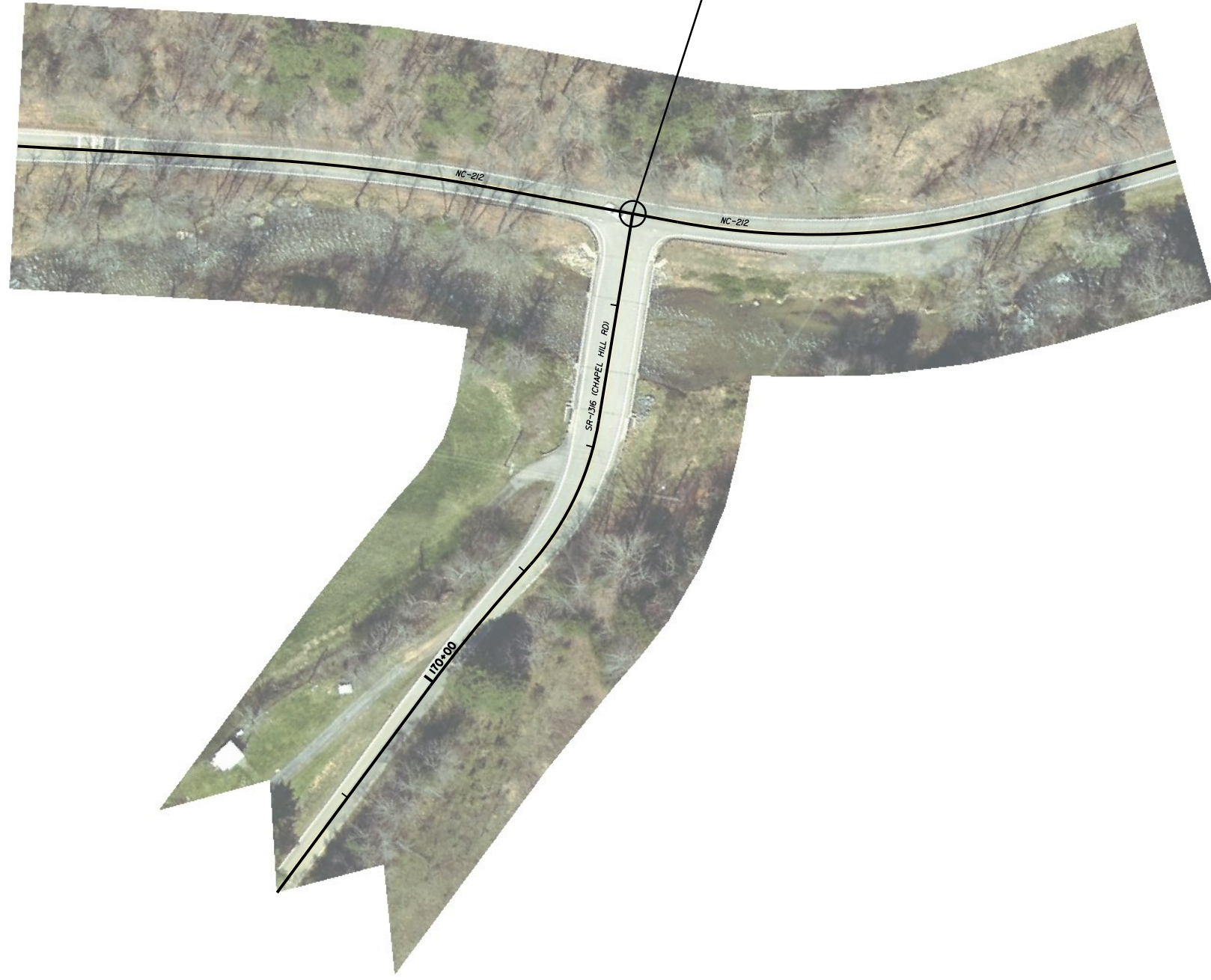


PROPOSED GUARDRAIL LOCATION 14  
 25 LF STEEL BEAM GUARDRAIL  
 2 EA GUARDRAIL END UNITS, TYPE TL-3

NOTE: ALIGNMENT AND STATIONING IS FOR REFERENCE PURPOSES ONLY.



END PROJECT DM00304  
SR-1316 (CHAPEL HILL RD) STA 173+65 =  
NC-212 CENTERLINE POT



NOTE: ALIGNMENT AND STATIONING IS FOR  
REFERENCE PURPOSES ONLY.